

A large version of the Picopoint Solutions logo is centered on the page. It consists of the word "Picopoint" in a large, bold, blue font with a trademark symbol, and "Solutions" in a smaller, grey, sans-serif font below it. The text is overlaid on a large, light blue dot grid pattern that forms a circular shape.

**Picopoint**<sup>™</sup>  
Solutions

Picopoint Solutions  
Helium 12  
4751XB Oud Gastel  
The Netherlands

[www.picopoint.com](http://www.picopoint.com)

# Our vision & mission

To offer ambitious clients a new and flexible touchpoint  
to generate longterm value  
through onpremise WIFI  
with smart campaign- and analyticstools.

# What we deliver

## EASY ACCESS WIFI

Wifi access by various login methods with branded landing pages.

## MOBILE MARKETING

Marketing campaigns and offerings based on the loyalty of your customers.

## MARKETING AND BUSINESS INTELLIGENCE

All the customer insight reports and recommendations.

# We choose WIFI

## Customers perspective

- Better reception than 3/4G
- Better speed than 3/4G
- No concerns over data packs
- Relevant offers and communication



## Business perspective

- Data ownership
- Increased shoptime
- Higher customer satisfaction
- Relevant offers and communication

# Your benefit: run a real life website

You can now manage your instore traffic like **online marketing**:

more insights + more interaction + more sales

- ▶ Yet keep your unique personal touch through the onsite salesforce!

# What if...

- ... you could pinpoint your inshop customers, even if there is no transaction?
- ... you could easily implement a brand new touchpoint, without the hassle of a new technology?
- ... your most important POS material (digital) was easily manageable regardless of nr. of branches or distance?
- ... you could connect the real world of your local branches, with an existing digital workflow, data and campaigns?

# How does this work?

User

Branche(s)

Enabler

Owner



Picopoint™  
Solutions

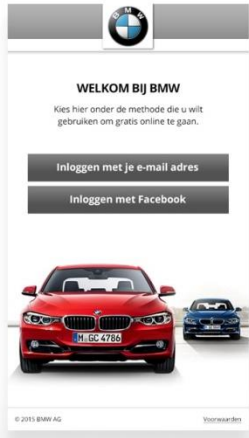


- Support
- Access
- Analytics
- Marketing



- POS database
- CRM database
- Loyalty program
- etc

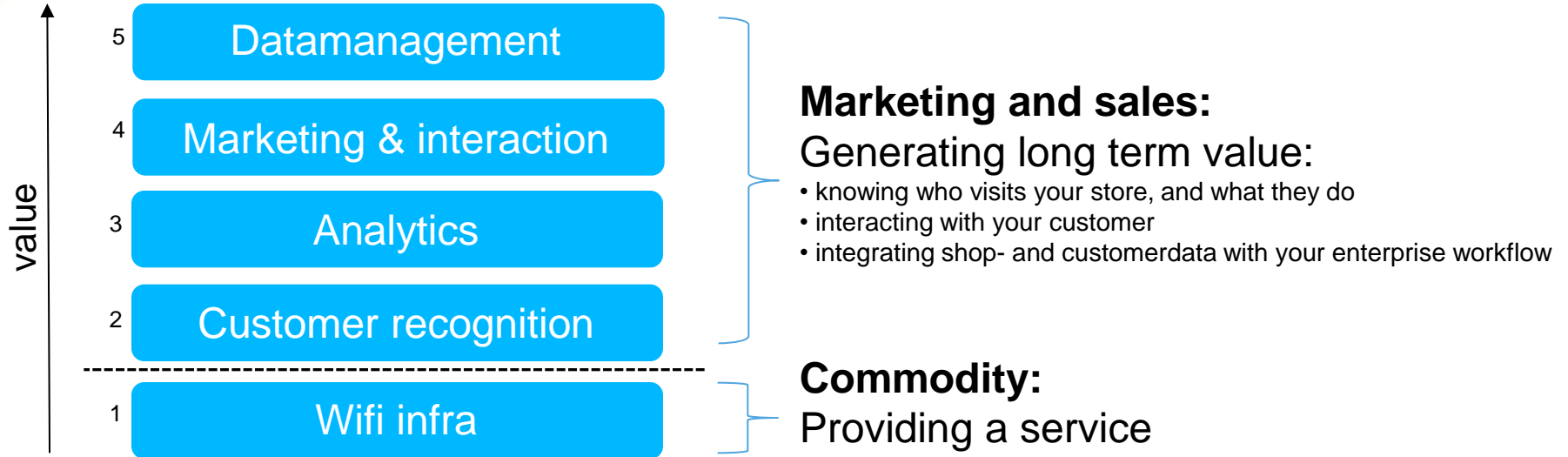
# Vital: a branded and user friendly service portal

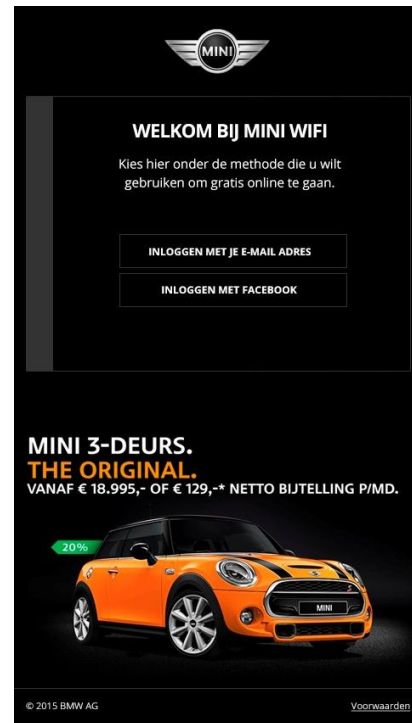


1. Customer selects WIFI network (supported by instore signing)
2. A custom login page automatically appears:
  - Custom form
  - In app (SDK)
  - Facebook (API)
  - SMS
  - Email (opt in)
3. Sign in only needed once
4. Automatic recognition of returning users

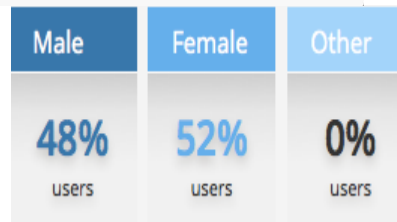
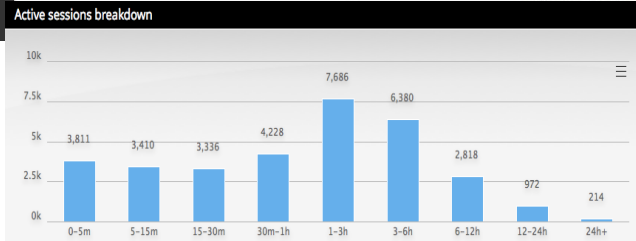
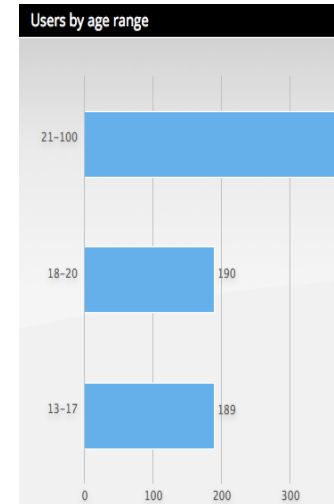
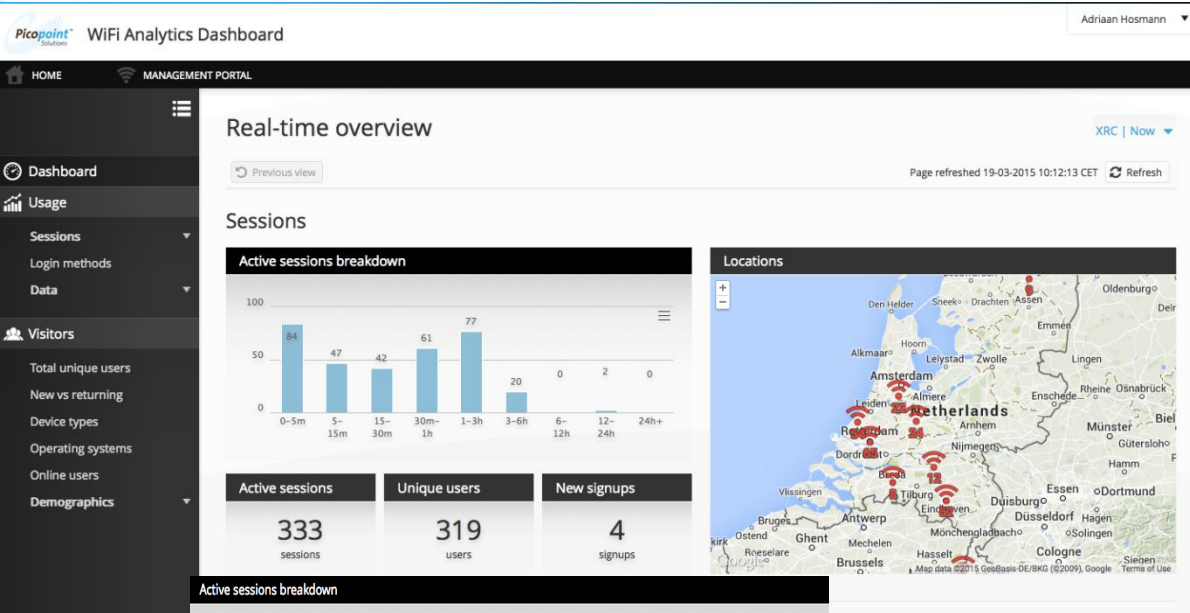


# WIFI marketingstack

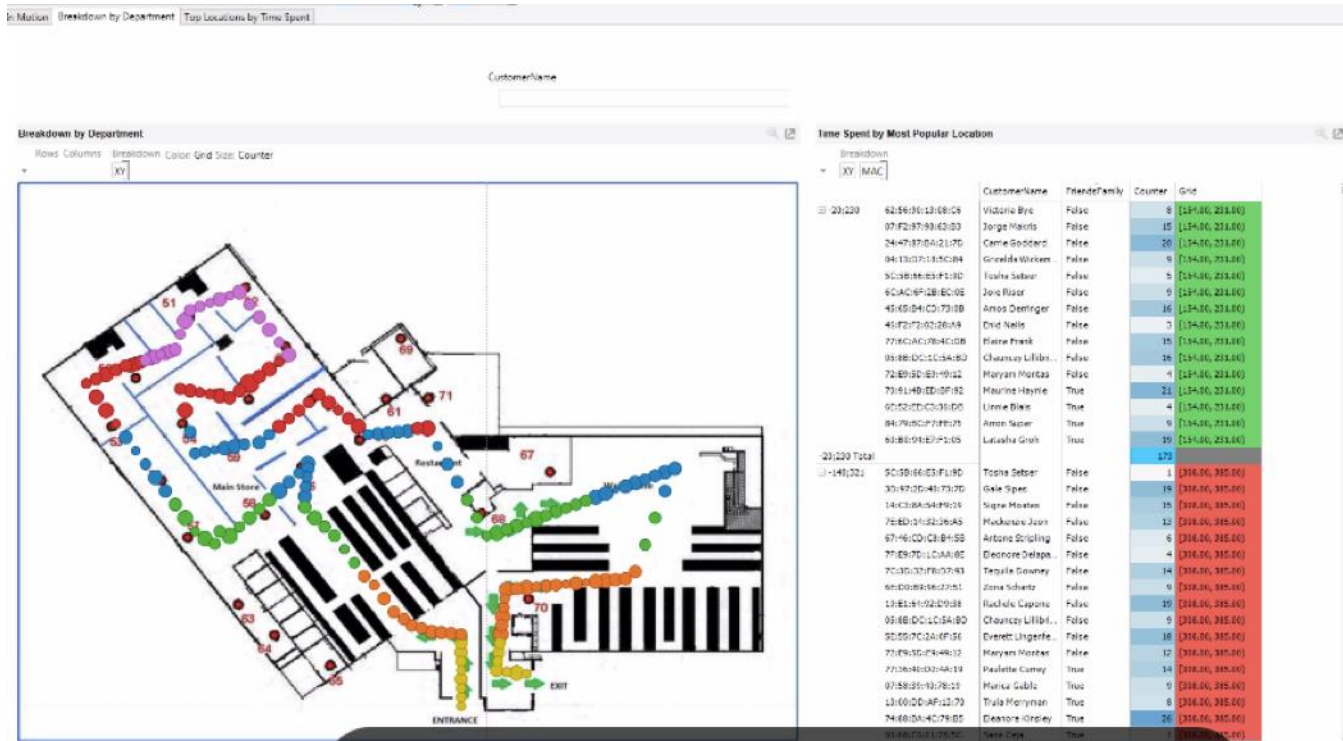




# Flexible analytics dashboard



# Proximity- and heatmapping



# Location based marketing

## BLOKKER

Welkom bij Blokker WiFi

### Registreren

Maakt u voor het eerst gebruik van het gratis Blokker WiFi netwerk?

Registreren

### Inloggen:

Gebruikersnaam:

Wachtwoord:

Inloggen

[Uw wachtwoord vergeten?](#)



# Questionnaires, etc.



## BMW CUSTOMER SURVEY



An introduction text can go here  
Fields marked with an asterisk (\*) are mandatory.

Vehicle registration\*

Title\*

First name\*

Last name\*

Email\*

Reason for visit\*

Relationship to vehicle\*



Back



Continue





# Our customers

ASDA



G-STAR RAW

RET



T Systems

CÓRIO

